



D00G1.1 iMan Supervisor Upgrade Manual

January 2013



This documentation applies to the product iMan manufactured by BioControl, Norway.

Documentation version 1.0 completely replaces previous versions.

Modifications since last documentation version:

- *none – version 1.0*
- *version 1.0 - version 1.1*
 - a) small additions*

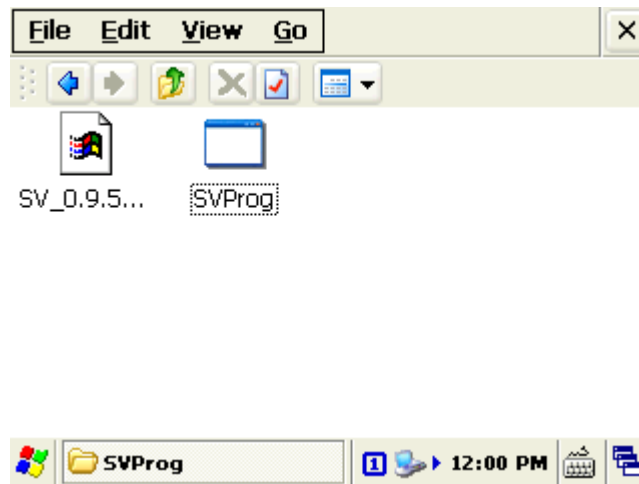
Note:

All information in this document describes product and details 'as is'. BioControl can not be held liable for (consequences of) incorrect or missing information in this document.

Check our website for latest version of this document and information on this product.

iMan Supervisor Upgrading

1. Connect power supply
2. Connect the iMan to a PC via USB
3. Download the latest Supervisor software SV_x.x.x.hex from:
<http://www.biocontrol.no/index.php?root=comm&branch=iman&leaf=soft>
4. Unpack .zip file (if necessary)
5. Copy SV_x.x.x.hex folder to Program Files in the iMan



6. Start iMan in Bootloader mode by doing steps 8-12:
7. Press and hold Power button for at least 25s to make hard reset



8. Keep holding Power button and press and hold Shift and Alt keys



9. Keep holding Shift and Alt keys and release Power key



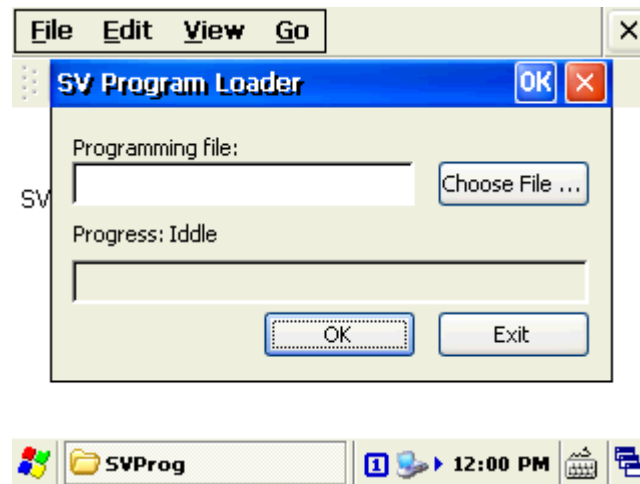
10. Release Shift and Alt keys, flashing red LED indicates bootloader programming mode



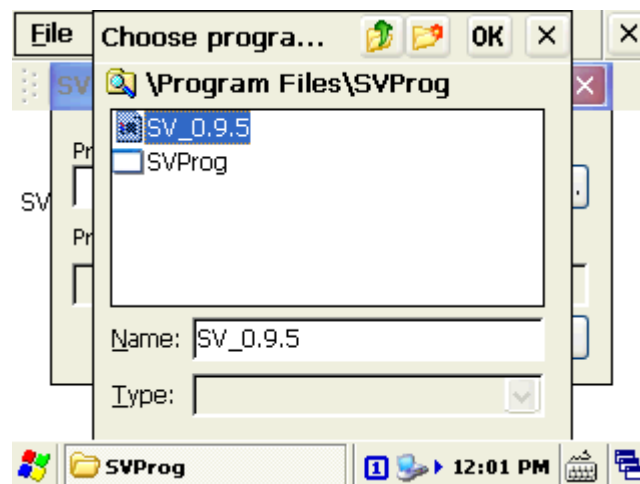
11. Windows CE starts in boot mode

Note! If red LED is not flashing repeat steps 8-12

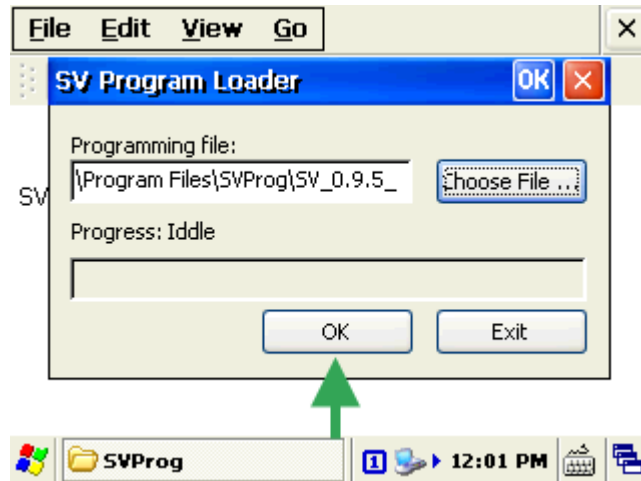
12. Run SVPROG software from iMan Menu



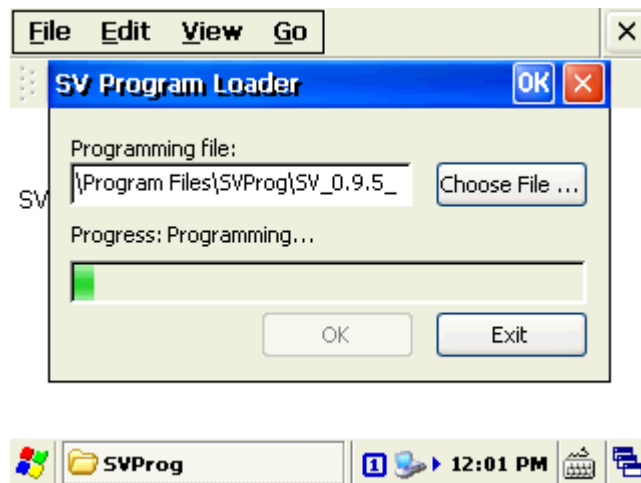
13. Select the latest supervisor software file by clicking "Choose File" button



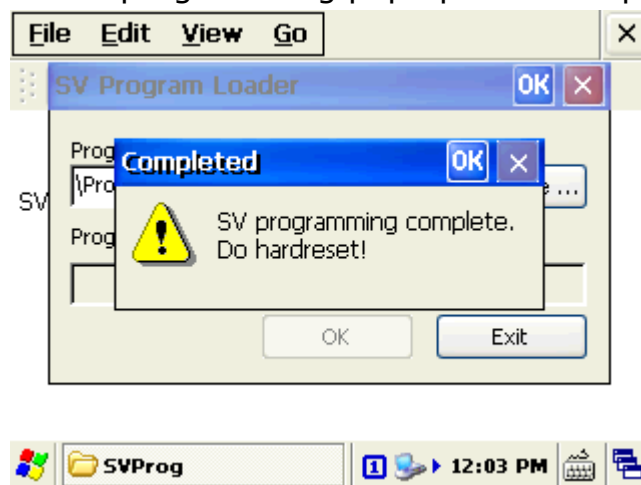
14. Press "OK" button to start upgrading



15. Programming is starting and progress bar is showing the status



16. After successful programming pop up window appears



17. Turn off the iMan (hold Power button for 25s seconds) and power on normally.

18. To verify software version go to Win->Settings->Control Panel->System, tab General.

