



D00G1.2 iMan OS Upgrade Manual

January 2013



This documentation applies to the product iMan manufactured by BioControl, Norway.

Documentation version 1.2 completely replaces previous versions.

Modifications since last documentation version:

- version 1.0 - version 1.1

a) Screenshots of new application

b) Screenshots of new installation

- version 1.1 - version 1.2

a) small additions

Note:

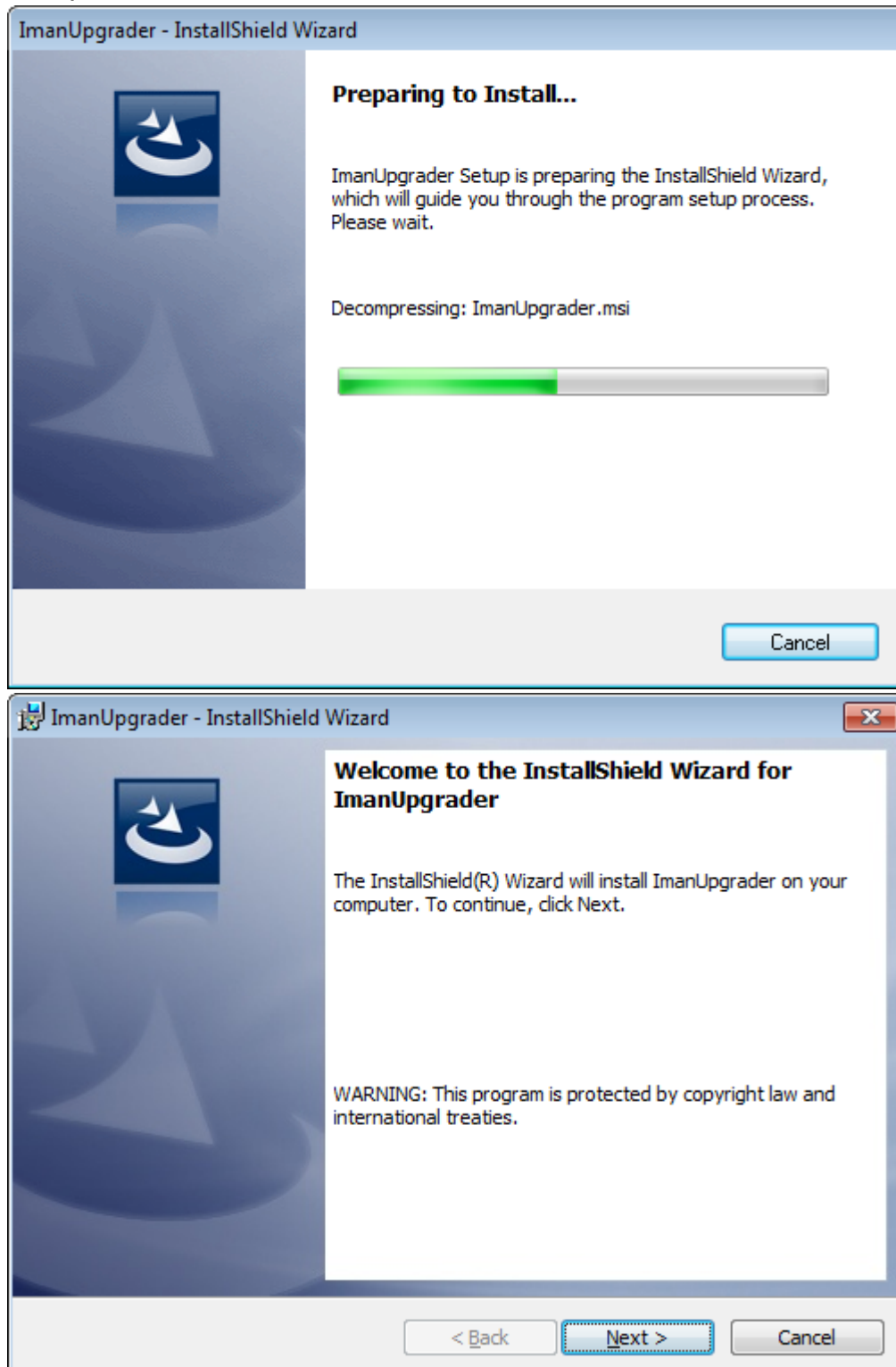
All information in this document describes product and details 'as is'.

BioControl can not be held liable for (consequences of) incorrect or missing information in this document.

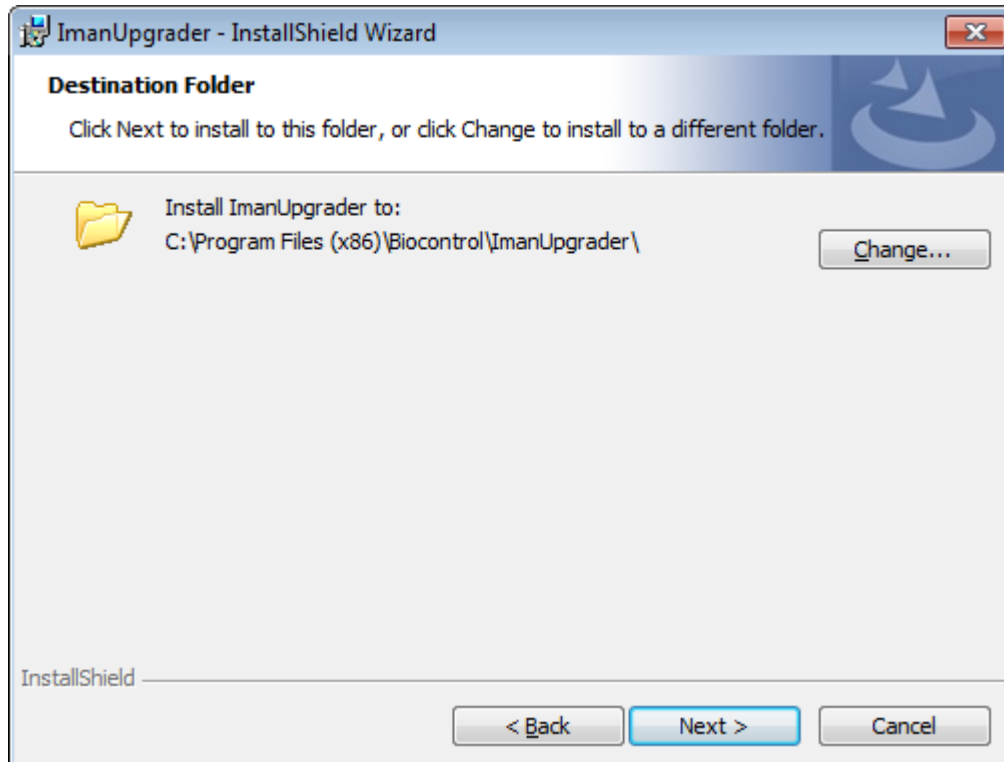
Check our website for latest version of this document and information on this product.

1. iMan Firmware Upgrader instalation

1. Download the iMan upgrader from:
<http://www.biocontrol.no/index.php?root=comm&branch=iman&leaf=soft>
2. Unpack .zip file
3. Run setup.exe

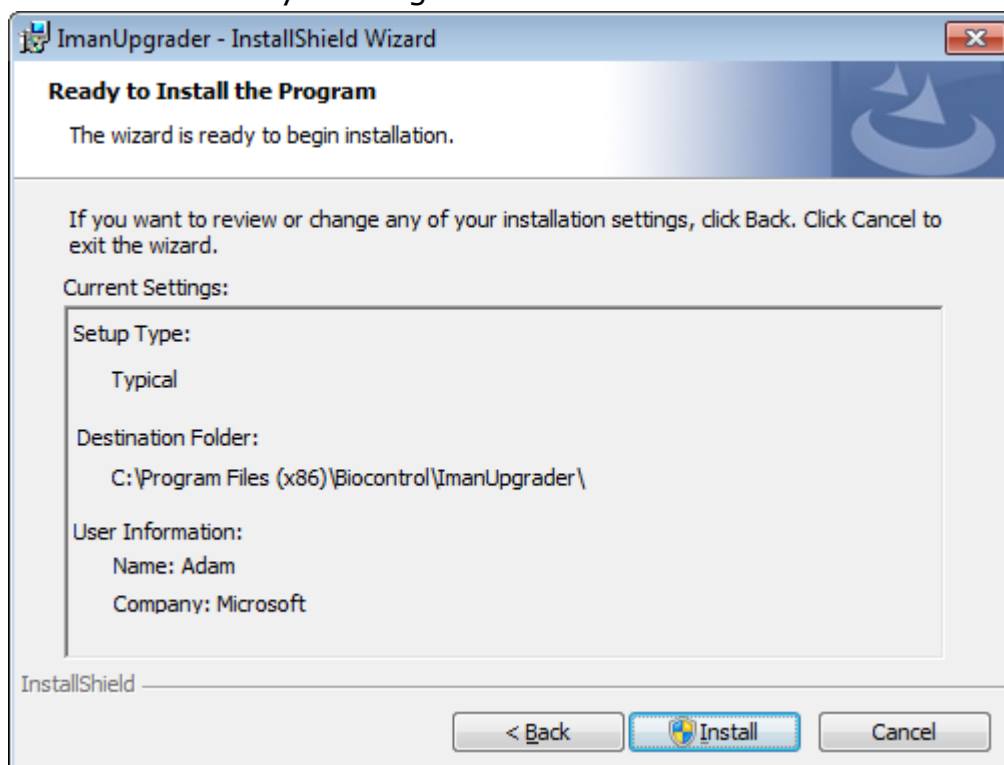


4 Wait while setup will prepare installation and then click **Next**



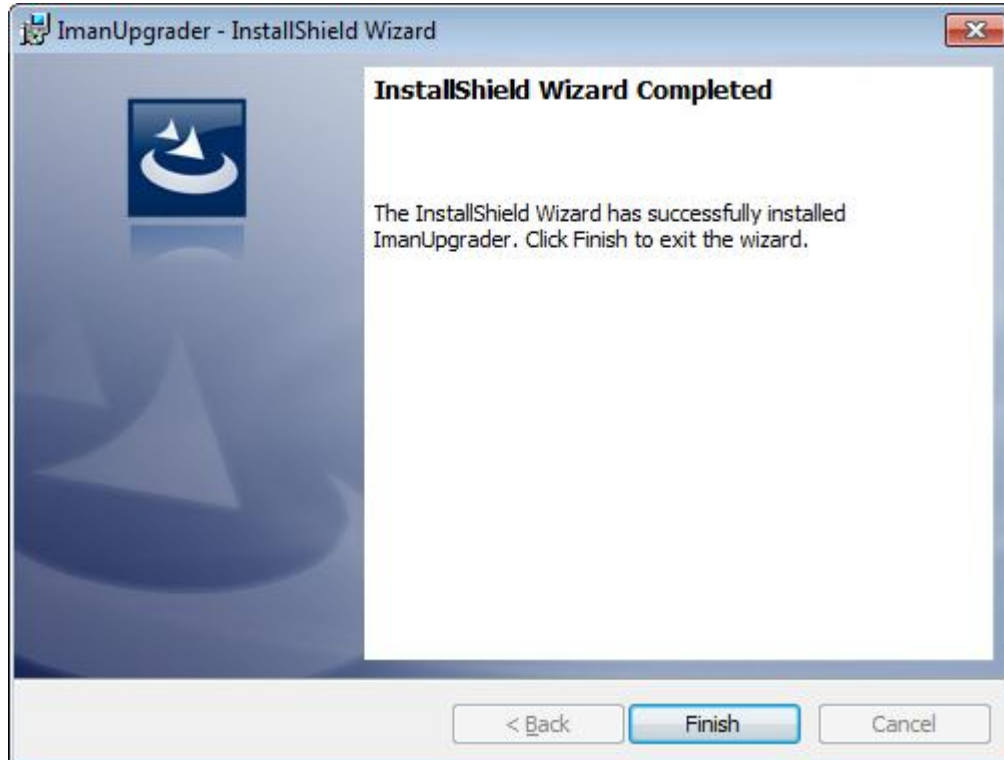
5. Choose installation folder and click **Next**:

6. Confirm installation by clicking **Next**:



7. Confirm that setup is allowed to change files on your HDD and wait until installation is in progress:

8. After successful installation close setup application by clicking Finish:



2. Driver Installation

1. **Attach power supply to the iMan and connect to the power!**
2. **Turn off iMan.**
3. **Connect it to the PC through USB.**
4. **Press and hold Shift and Windows keys, Press Power button on iMan for about 2 seconds-> You should see red diode for a while. Release keys on iMan.**
5. **Screen should turn on (You won't see the splash-screen)**
6. **Wait until Windows install drivers.**

3. Upgrading iMan firmware

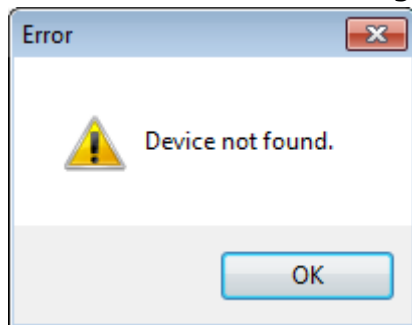
1. Download latest iMan OS image form <http://www.biocontrol.no/index.php?root=comm&branch=iman&leaf=soft>
2. Run iMan Upgrader.



3. Press **ScanForDevice** – application will look for connected I’man

3.1 Device found message

3.2 Device not found message



In that case please check

- if I’man is connected to PC
- if I’man is connected to power
- if I’man is in SamBa mode
- if drivers are correctly installed

4. Press **Upgrade Iman** and open downloaded image:



5. It will take few seconds to prepare image

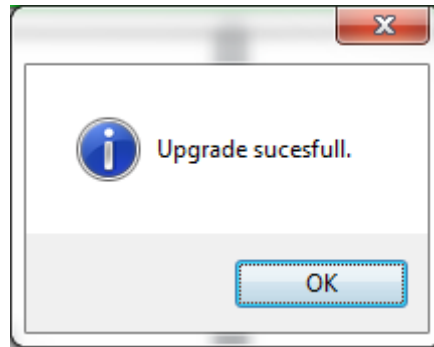
6. I'man will start being programmed and you will see image like below. Connecting to I'man might take some time depending on operating system you have (up to 5 minutes).



7. After connecting to I'man progress bar will start to move.



There are 5 tasks to complete. Wait till progress bar gets to end and you will get message:



- 8. Close the application and turn of I'man
- 9. I'Man is now upgraded.